

Emerson HPCL 4092 00113503202

Specifications

Merk	Emerson
Type	HPCL 4092 00113503202
Product type	Air Cooled Chiller
Capaciteit kW	1051
Capaciteit Tons	298,8
Koudemiddel	Freon
Koudemiddel Type	R 134a
Pump	✓
Gewicht in kg.	10.260
Afmetingen	11650x2330x2550 mm (LxWxH)
Compressor(s) type & model	2x Bitzer CSH9581-210Y-40D
Display	Socomec Diris A40
Number of fans	16
Fan specifications	50 Hz - 2,21 kW - 980 RPM
Opmerkingen	y.o.b. 2007
Stock	2

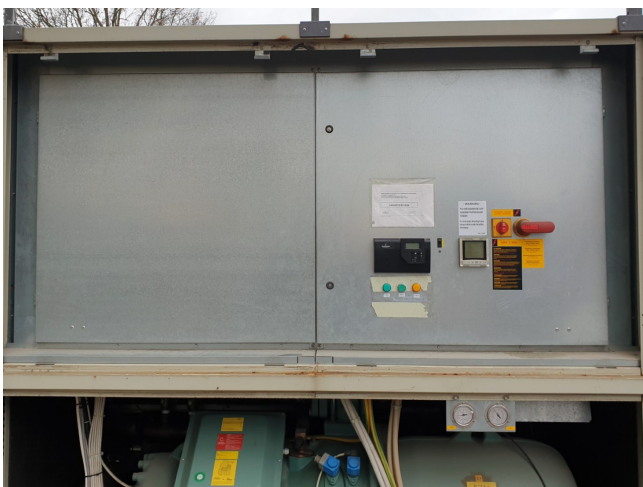
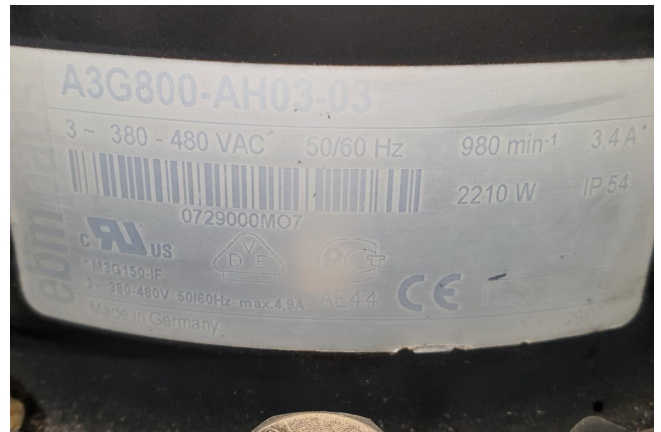
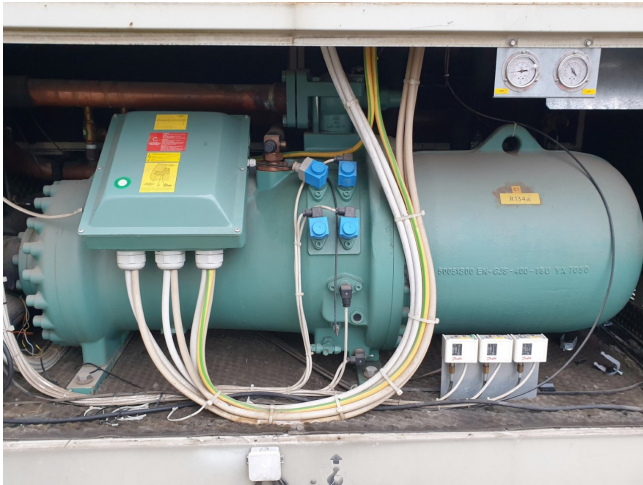


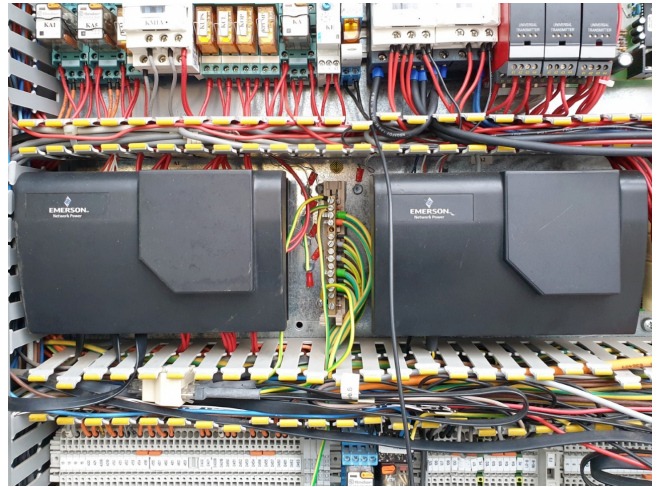
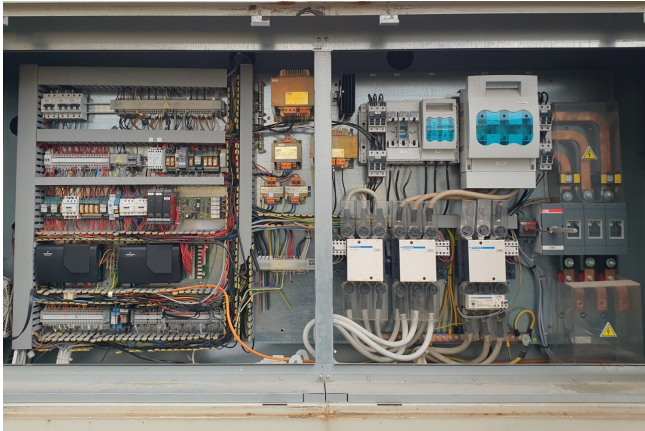
Description

Used Emerson HPCL 4092 00113503202

Gebruikte Emerson HPCL 4092 00113503202 geluidsarme luchtgekoelde chiller. Bevat de volgende elementen: 2x Bitzer CSH9581-210Y-40D schroefcompressor met economizer. Axiale condensorventilatoren Ebm-papst met een luchtdebiet van 291.200 m³/h. Verdampershell & tube intern volume 112 ltr.







Modello	MOD.IDR.NO-GLYCOL. SX 1200kW 186798#			838090028
Type				CE
Matricola	4239	5/07/2007	1 / 1	
Serial number				
Codice	186798			MADE IN ITALY
Code				
Mese di costruzione				09/2007
Month of construction				
Peso in funzionamento (kg)				1850
Operating weight (kg)				
Peso di trasporto (kg)				214
Shipping weight (kg)				
Capacità accumulo (l)				439
Tank capacity (l)				
Capacità vaso di espans.(l)				25
Expansion tank capacity (l)				
Prearica vaso di espans.(bar)				1,50
Expansion tank pre-loading press.(bar)				
Pressione max di esercizio (bar)				5,00
Maximum operating pressure (bar)				
Pressione di collaudo (bar)				7,50
Pressure test (bar)				
Valvola di sicurezza (bar)				5,00
Safety valve set(bar)				
N° e tipo pompa/e				1 NB 80-160/161
N° and model of pump/s				
Temperatura (°C)	Min	-	Max	
Temperature (°C)	0		90	
Codice manuale	826050096			
Manual code				
ALIMENTAZIONE ELETTRICA - ELECTRICAL SUPPLY				
Voltage	400V/3/50HZ			
F.L.I. kW	20,00	F.L.A. A	39 00	
Schema elettrico	825040040 REV.0			
Wiring diagram				
				81083383 529784
fiorini				Via N.Copernico 81/85 47100 Forlì (FC) - Italy

